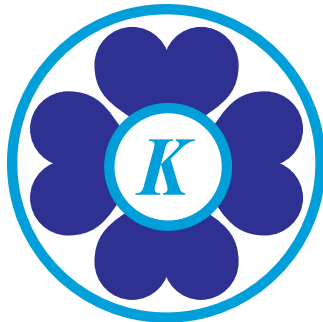




PROFILE



# KORAMA CLOVER INDUSTRIES LIMITED

Km 6 OldAba/owerri Road, Osisioma Ind. Layout Aba Abia State  
Customer care line: 09062972245, 09062972218, 09062972205

*Email: [Cloverpaints@koramagroup.com](mailto:Cloverpaints@koramagroup.com)  
[www.koramagroup.com](http://www.koramagroup.com)*



ISO 9001 :2008 QMS REGISTERED COMPANY



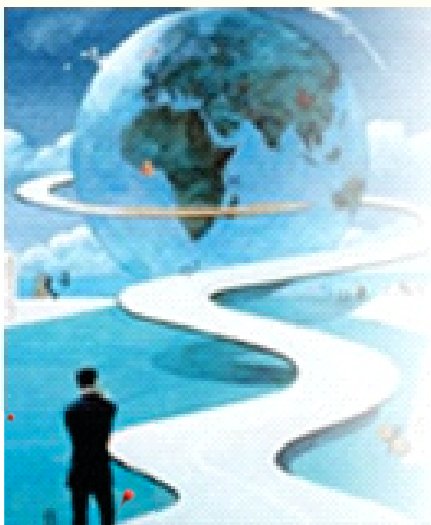
NIS AWARD OF EXCELLENCE  
STANDARD ORGANISATION OF NIGERIA  
ISO 9001:2008 QMS CERTIFIED COMPANY

## Mission Statement



To provide quality paints that meets the aesthetic and protective needs of all classes of our society both in terms of quality and cost. To continually innovate our operations and processes to reward good and outstanding performances while adding value to our available human and material resources

## Our Vision



To be one of the best performing indigenous paints, packaging and chemical processing industries in Nigeria, by improving our products from the consumers satisfaction perspective. While meeting the statutory standards to reach the world market

## Executive Summary

We have the pleasure to introduce our company **KORAMA CLOVER INDUSTRIES LIMITED** and her subsidiary, **CHESTER PLASTICS (NIGERIA)LIMITED**. We have combined staff strength of three hundred (300). The company indigenous privately owned paint and plastic manufacturing firm and were incorporated in October 1983 with the company and allied. **KORAMA CLOVER INDUSTRIES LTD** produces high quality **CLOVER PAINTS** range of products for Household decorative and Hi-tech coatings, industrial and marine paints, Sinclair Automotive and protective coatings, as well as fillers, lacquers and wood finish. We have a good distribution network, with seventeen sales Depots strategically located nationwide, including Kano, Abuja, Kaduna, Lagos, Benin, Port Harcourt, etc.

As an option for growth, we are vertically integrated with a plastic manufacturing division, **CHESTER PLASTICS (NIGERIA) LTD**, which is engaged in the production of plastic wares, for industrial packages and household uses. Installed and in production in our factory are Injection & Blow Moulding machines as well as Film Extrusion machine. These produce Paint/Packaging Buckets, Jerry Cans and Waterproofs not only for our use, but heavily patronized by all other paint manufacturers in Nigeria.

Also, we are equipped with a modern technical workshop, for fabrication of spare parts and maintenance of plastic moulds.

Our products have witnessed an impressive demand since our repositioning/restructuring.

## Company Structure

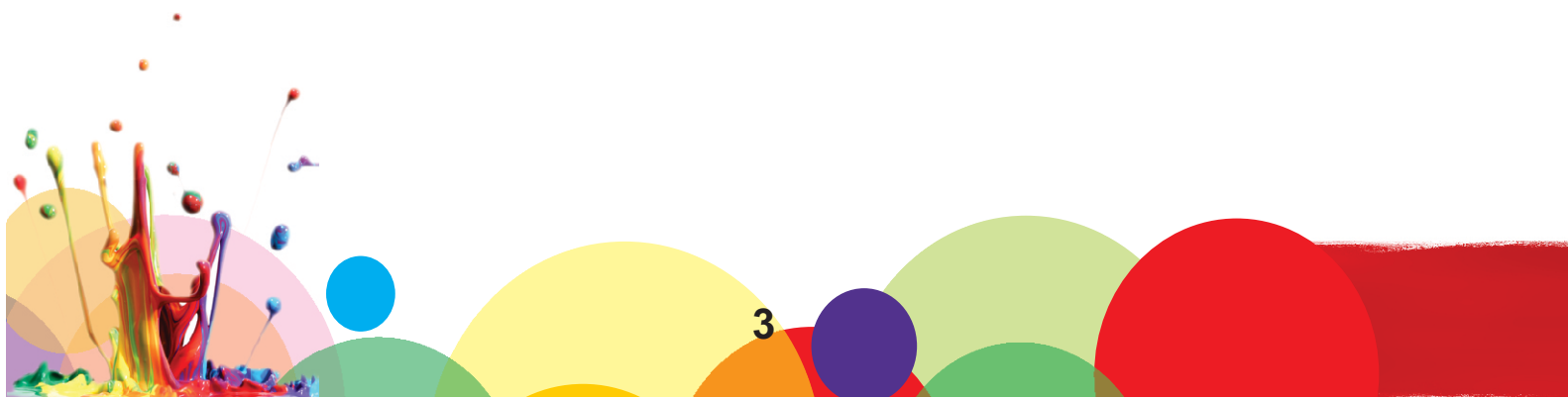
The Companies are departmentalized, with qualified and experienced professionals heading departments in each section.

Mr. Okoroama Chidozie. C. is the Managing Director of Korama Clover Industries Ltd. Engr. Okoroama Leonard Emeka is the Managing Director of Chester Plastics (Nigeria) Limited - our subsidiary. While SIR INNOCENT N. OKOROAMA, is the Chairman/Founder of the Group of Companies.

# Awards

The company won the much-desired Nigerian NATIONAL PRODUCTIVITY MERIT AWARD, in 1993. Also, as a consequence to our high quality products, the Standard Organization of Nigeria, has consistently, awarded our products THE NIGERIAN INDUSTRIAL STANDARD (NIS) We are the first Paint manufacturer, East of the Niger, to receive the NIS Award in 1997 (Currently, we maintain NIS Gold Award). We are ISO 9001 : 2008 Quality Management System (QMS) Certified.

On 8th December, 2005, we received an Award – THE MOST CLEAN OF ENVIRONMENTALLY FRIENDLY COMPANIES IN ABIA STATE by the Abia State Government. On the 6th of February, 2006, in Geneva Switzerland, we received the CENTURY INTERNATIONAL QUALITY ERA AWARD (Gold Category) during the QUALITY CONVENTION in Geneva 2006, by the Business Initiative Directions, Spain, in recognition of our outstanding commitment to Quality and excellence in customer satisfaction, strategic planning and business leadership as established in the QC100 TQM System. We also received the West African Quality Household Paints, Wood Finishes And Industrial Coatings Manufacturer of the Year Award 2007 and the Best Car Paint of the year 2011 and 2013 Award respectively from the Institute for Government Research & Leadership Technology, Nigeria.





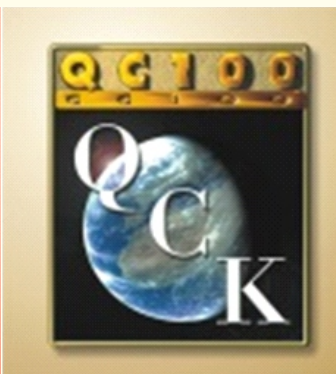
**GOLD**



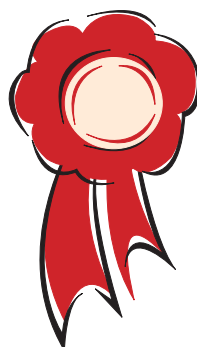
NIS AWARD OF EXCELLENCE  
STANDARD ORGANISATION OF NIGERIA  
ISO 9001:2008 QMS CERTIFIED COMPANY



ISO 9001 :2008 QMS REGISTERED COMPANY



BEST CAR PAINT PRODUCT 2011 AND 2013



WINNER WEST AFRICAN BEST QUALITY HOUSEHOLD PAINTS  
LACQUER, WOODS FINISHES, & AUTO & INDUSTRIAL COATING  
MANUFACTURING COMPANY OF THE YEAR 2015

Africa's Best Manufacturing Company  
Of The Year 2017

## Products

### HALLMARK SUPERIOR ACRYLIC EMULSION PAINT



This is a high premium Emulsion paint, formulated with the highest quality resins and pigments to give a hi-build and heavily bodied semi-glass Emulsion paint. HALLMARK SUPERIOR ACRYLIC TOP GRADE EMULSION PAINT has an exceptional covering power, ease of application, adhering properties and durability. They are highly recommended for exterior and interior surfaces to withstand adverse weathering conditions

### CLOVER-FIX PAINT



This serves as an economy brand of our Emulsion paints. It is formulated with high quality water-based copolymer resins, highly weather resistant pigments/extendors and additives which enhance easy application. High opacity and reasonable durability at an affordable price. Suitable for exterior and interior applications, it is available in wide range of colours. Recoatable within 1-2 hrs.it can be thinned down with water to desirable viscosity prior to application

### CLOVER SUPERFINE EMULSION PAINTS



Are based on high quality acrylic resin, giving excellent application properties, good coverage, durability and fast drying. It is highly suitable for tropical conditions, and can be used for interior and exterior surfaces. CLOVER EMULSION PAINTS can be applied easily by brush, roller or spray on plastered or brick wall. They are normally dry and recoatable within 2 hours





### SINCLAIR SYNTHETIC CAR PAINT/SINCLAIR METALLIC FINISH AND VARNISH

Sinclair solid and metallic finishes are formulated with the latest scientific technology using high quality synthetic resins, excellent weather resistant pigments and hi-tech additives, which enhance ease of application, maximum obliteration, optimum adhesion, colour stability and long lasting sheen on all types of vehicles including cars, buses, tractors etc.

Sinclair varnish adds more protection extra sheen and durable finish to all auto finishes. Surface drying time is within 2-4 hrs under ambient temperature. Hard drying is overnight. **SINCLAIR NITROCELLULOSE PRIMER/MATT BLACK** This is scientifically formulated to give a durable corrosion inhibitive effect on the substrate. The primer also acts as a surfacer and it is quick drying. It can be thinned down with toluene to desired viscosity prior to application. Drying time is about 30 seconds under ambient



### SINCLAIR (D86) AUTO BODY POLYESTER FILLER PASTE

Is a blend of anti-corrosive pigments and extenders in unsaturated polyester resin to give professional strength and filler on all types of metals, steel, woodworks and fibreglasses. It is quick drying. It readily mixes with its hardener and is easily sandable, filled or machined within 20-30 minutes after application. An excellent body filler for all kinds of automobiles.8



### CLOVER RED OXIDE PRIMER

is a quick alkyd based primer which mainly protects ferrous metals against rust. It also serves as an under-coat and subsequent finishing coat



**CLOVERTEX** is a High structured wall finish specially formulated for the tropical climate. A selective blend of highly weather resistant pigments, fire retardants and dry film protector in latest styrene acrylic enhances excellent adhesion, finest tailored patterns and durability on external and internal applications on concrete, stones and plastered walls. Spreading rate is between 2.5-1.7m<sup>2</sup>/L in one coat (Depending on the porosity of the substrate). It can be thinned down to desired viscosity with

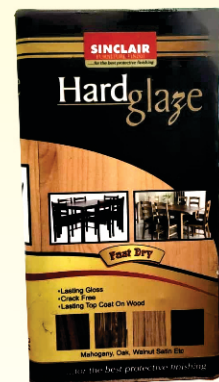
clean water if necessary WHEATHERTEX HI-BUILD TEXTURED COATING is made from a vinyl and acrylic co-polymer resin, light fast pigments and blended with special fillers, stabilizers and fungicides to produce a tough and highly resistant durable textured finish. A variety of textures and designs can be obtained depending on the method of application

The Company's Product Brands Include:

## HOUSEHOLD PAINTS

- |                                              |                                          |
|----------------------------------------------|------------------------------------------|
| (1) Hallmark Superior Acrylic Emulsion Paint | (9) Weathertex Hi-Build Textured Coating |
| (2) Hallmark Gloss Paint                     | (10) Hallmark Special Filler             |
| (3) Hallmark Maxi-Bright Aluminum Paint      | (11) Clover-fix Emulsion Paint           |
| (4) Clover Superfine Emulsion Paint          | (12) Clover-fix Gloss Paint              |
| (5) Clover Gloss Paint                       | (13) Clover Undercoat                    |
| (6) Clover Red Oxide Primer                  | (14) Quick Drying Paint                  |
| (7) Clover Wood finishes                     | (15) General Purpose Gloss Paint         |
| (8) Clovertex Textured Coating               | <b>WOODFINISHES</b>                      |
|                                              | (17) Lacquer Gloss                       |

## Other products



### SINCLAIR CAR PAINTS

- (3) Sinclair Synthetic Paint
- (4) Sinclair Metallic Car Paint
- (5) Sinclair Varnish
- (6) Sinclair Primer
- (7) Sinclair Matt-Black
- (8) Sinclair Auto Body Filler
- (9) Sinclair Marine Coatings
- (10) Sinclair Chlorinated Rubber Paints
- (11) Sinclair Road Marking Paints
- (12) Sinclair Polyurethane Finish
- (13) Sinclair Undersealant/Antirust
- (14) Hallmark Autocryl paint
- (15) Hallmark Auto Hardener
- (16) Hallmark Auto Shine (Clear Coat)
- (17) Hallmark Auto Slow thinner

### HIGH TECHNOLOGY PAINTS

- (33) Hallmark Wall Screen Emulsion
- (34) Hallmark Satin Emulsion
- (35) Shiny Wax
- (36) WeathertexSheentex
- (37) Epoxy Paints
- (38) Epoxy Hi-build Paints
- (39) Epoxy Primer
- (40) Concrete Waterproofing Paint
- (41) Hallmark Supercoat Base

### PACKAGINGS

- (42) Paint Buckets, Glue Cans and other Industrial Packagings
- (43) Plastic Wares for Household Uses.

Our current planned objectives is to continually improve our product to meet market demands and to expand our productive capacity and technical capability, We also intend to explore external markets in Africa, especially, in the ECOWAS sub-region and the world at large.





Introducing  
our

# Chester Plastics

*for that best quality*



[illegible]